

OAKLAND CUSD #5

DRIVER ED
APRIL 20-24, 2020

JILL SWEENEY

Week of April 20-24, 2020

Driver Education

Mrs. Sweeney

Please pick 1 out of the 3 activities to complete every week or progress as indicated. Please email me a google doc or word doc or submit the activity to the homework box located in the Lake Crest foyer. Please feel free to reach out to me or the office and we will work together to get you what we need.

If email submission is not an option contact Mrs. Sweeney for alternative ways to submit work.

The class is required to fulfill 3 hours to meet the state mandate of 30 hours in classroom. We will have 1 assignment per week for 6 weeks. Some assignments will be ongoing however it is essential that you submit your progress each week.

Please email me at jill.sweeney@oakland5.org or call the school and leave a message, and I will give you a call as soon as I can.

My Office Hours: Monday – 8-10am

Tuesday – 10-12am

Wednesday – 8-10am

School Office Hours: Monday – Thursday 7:30-11:30

Phone: 217-346-2166

Class	Choice 1	Choice 2	Choice 3
Driver Ed	What to do when a police officer pulls me over	Worksheet part 1	Buying a car Part 2

Driver Education Class

April 20-24

What do I do when a Police Officer pulls me over?

Write a one full page paper on what your procedure will be when being pulled over by a police officer by using the information and concepts learned in this class. From the moment you see the police car lights in your rearview mirror to the time when the officer allows you to go on your way.

The paper should be typed 12 pt times new roman double spaced.

If computer is not available hand write a 2 page paper, every other line.

You may refer to your notes and textbook.

Name: _____

Dr Ed Sweeney
Date: _____

Score: _____

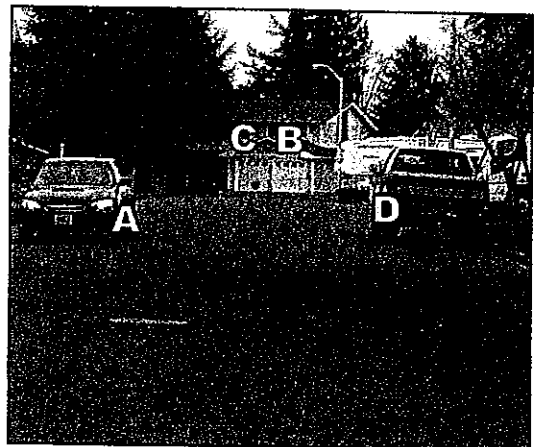
2 of 4

Multiple Choice Questions – Circle the letter of the best answer.

1. Risk factors are contributed by
 - a. drivers and pedestrians
 - b. vehicles
 - c. roadway environments
 - d. all of the above
2. The correct driver seating position includes
 - a. hips pushed all the way to the back of your seat
 - b. heel on floor, ball of foot on the brake
 - c. knees and elbows slightly bent and torso at least 10 inches away from steering wheel
 - d. all of the above
3. Push-pull steering technique is used for
 - a. making most turns
 - b. making sharp turns
 - c. driving through curves
 - d. only a and c are correct
4. To make a smooth stop
 - a. push to the point of resistance and hold
 - b. release the pedal just before stopping
 - c. trail brake just before stopping
 - d. gently pump the brake
5. Before making a turn, you should
 - a. see a clear path, and then accelerate hard
 - b. stop, and then proceed
 - c. see a clear path, and then turn your head before turning the wheel
 - d. turn your wheel first, and then turn your head
6. What part of your vision lets you see details?
 - a. Fringe Vision
 - b. Central Vision
 - c. Peripheral Vision
 - d. Blind Spot
7. Aiming for targets helps you
 - a. steer accurately
 - b. find information early
 - c. plan far ahead
 - d. all of the above

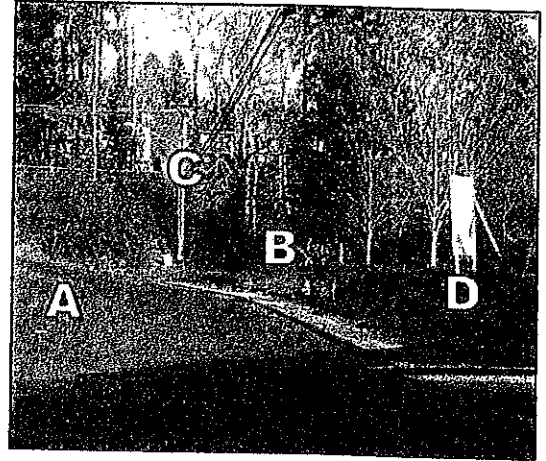
Use the photo on the right to answer questions 8 and 9.

8. You are the driver in the photo on the right. What is the correct target?
 - a. The car on the left
 - b. The garage door on the right
 - c. The garage door on the left
 - d. The parked truck on the right
9. Where should you focus your central vision?
 - a. The car on the left
 - b. The garage door on the right
 - c. The garage door on the left
 - d. The parked truck on the right



Use the photo on the right to answer questions 10 and 11.

10. You are the driver in the photo on the right. Your car is off target. Where should you focus your central vision?
- On the center line, the left edge of the lane
 - On the sidewalk, near the right edge of the roadway
 - On the light pole ahead
 - On the billboard to the right
11. To get back on target you should
- steer sharply to the left, toward the center of the road
 - hold the wheel straight
 - steer slightly to the left, toward the pole
 - steer sharply to the right, toward the billboard



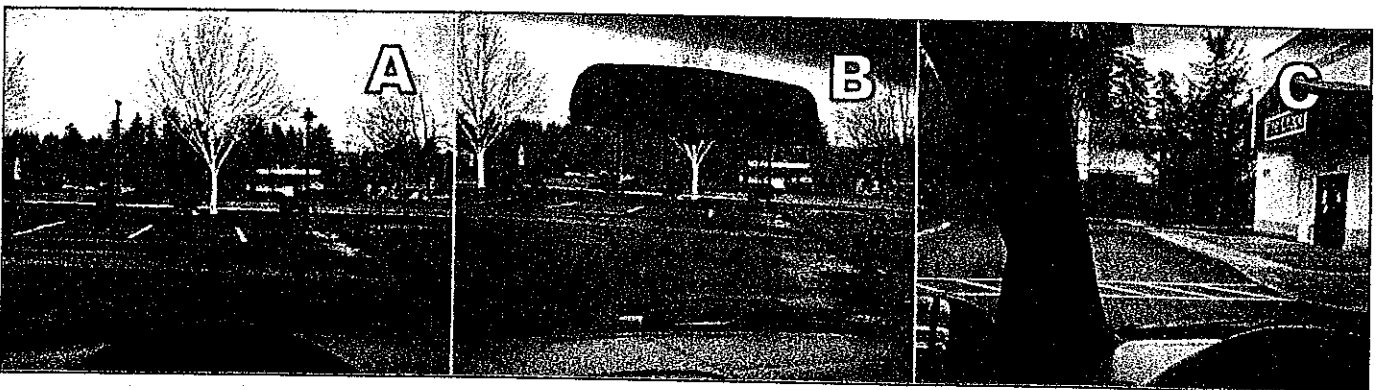
True or False – Circle T if the statement is true or F if the statement is false.

12. T F A target can be a moving object if it is in the center of your intended path.
13. T F Always make sure you have a clear path before moving your vehicle.
14. T F The speed limit in a school zone is 20 mph.
15. T F A hole in traffic is larger than a gap in traffic.
16. T F When backing out of a 45-degree space on the right, begin turning when the left rear pivot point and the right front side mirror clear vehicles on the left and right.

Short Answer

17. Why it is a good practice to have your headlights on during the day?

Use the photos below to answer questions 18 - 20. In each photo, the white tree is the target.



18. Which photo shows the transition peg for a right turn? How can you tell?
19. Which photo shows the transition peg for a left turn? How can you tell?
20. Which photo shows the car is on target? How can you tell?

1. What type of vehicle are you looking for? What features will meet your personal needs? Model, make, year, mileage
2. Look up some reviews on this car. How reliable is it? How safe is it rated?
3. How much does it cost?
4. How much will repairs cost compared to the average car?
5. Has this car had any recalls?
6. What kind of gas mileage does it get?
7. Has this car ever been wrecked? Totaled? How many owners has it had?
This will be found on Carfax.com which is membership only however this is worth the price when buying a car. The ownership will be on the title.
8. Does this car have a warranty?
9. What is the difference between leasing a car and buying a car?

Some websites that may be helpful: Kelly blue book, consumer reports, Carfax, nhtsa